

MC 210-F1

Pluggable terminal block



Pitch: 5.08mm(0.200inch)

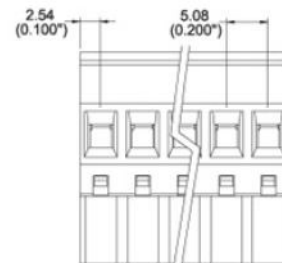
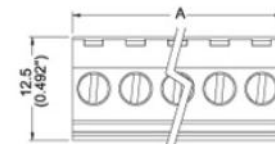
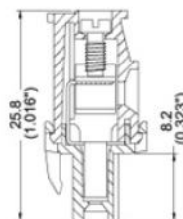


SPECIFICATIONS

			CUL	VDE
負載電壓	Rated Voltage	Bemessungsspannung	AC 300V	AC 380V
負載電流	Rated Current	Bemessungsstrom	16A	16A
電線線徑	Wire Size	Leitergrößen	24~12AWG	0.2~4mm ²
塑膠本體	Housing Material	Isolierstofftyp	Polyamide66(UL94V-0)	
押線圈	Cage Clamp	Klemmkörper	Brass, Ni plated	
導電夾片	Contact	Kontakt	Phosphor bronze, Tin plated	
螺絲	Screw Size	Schraubengewinde	M2.6, steel, Zinc plated	
操作溫度	Operating Temperature	Umgebungstemperatur	-40°C to + 105°C	
扭力	Torque	Anzugsmoment	7 lb-inch	
UL File No.	E167040			

TABLE

Item No.	A(mm)	A(inch)
MC210-F102	10.2	0.400
MC210-F103	15.2	0.600
MC210-F104	20.3	0.800
MC210-F105	25.4	1.000
MC210-F106	30.5	1.200
MC210-F107	35.6	1.400
MC210-F108	40.6	1.600
MC210-F109	45.7	1.800
MC210-F110	50.8	2.000
MC210-F111	55.9	2.200
MC210-F112	61.0	2.400
MC210-F113	66.0	2.600
MC210-F114	71.1	2.800
MC210-F115	76.2	3.000
MC210-F116	81.3	3.200
MC210-F117	86.4	3.400
MC210-F118	91.4	3.600
MC210-F119	96.5	3.800
MC210-F120	101.6	4.000
MC210-F121	106.7	4.200
MC210-F122	111.8	4.400
MC210-F123	116.8	4.600
MC210-F124	121.9	4.800



Note:
Screw Plating: Changes are available upon request